



**Fitzpatrick and
Scott Hall
Open Class
Exhibits**

July 15-21, 2018

*Reaching into the
Past, To Make
Memories that Last!*

NOTES

Dear 2018 Open Class Exhibitor,

Thanks for your interest in exhibiting at the 2018 Johnson County 4-H and Agricultural Fair. Please read the General Rules and select classes and item numbers you plan to exhibit in during the 2018 Johnson County Fair.

Open Class **Crop** Exhibits in Fitzpatrick Hall may be checked in at the East door on:
Friday July 13, 2018 8 am–9:15 am

Open Class **Horticulture and Garden** Exhibits in Fitzpatrick Hall may be checked in at the East door on:
Saturday July 14, 2018 8 am–11 am

Open Class **Exhibits in Scott Hall** may be checked in at the Northeast door on:
Friday July 13, 2018 6 pm – 8 pm
Saturday July 14, 2018 9 am – 11 am

Scott and Fitzpatrick Halls will be open for viewing:
Sunday July 15, 2018 1 pm – 10 pm
Monday – Friday July 16 – 20, 2018 11:30 am – 10 pm
Saturday July 21, 2018 11:30 am – 9 pm

Scott and Fitzpatrick Halls Open Class exhibits will be released:
Sunday July 22, 2018 1 pm – 3 pm

You may also want to be involved in the
Pillow of Hope Contest, Page 23/Sponsored by Trafalgar Homemakers
Open Class Style Show, Page 31-35/Sponsored by JoCoEHA
Quilt Block Contest, Page 36/Sponsored by JoCoEHA
Blueberry Baking Contest, Page 37-38/Sponsored by JoCoEHA

We are excited that you are planning to be a part of the 2018 Open Class Exhibition. Should you have questions, please call 317-736-3724.

Sincerely,

Danielle Dennis
Extension Educator
Health & Human Sciences
Johnson County

Elizabeth Acker
Fair Board Superintendent
Open Class – Scott Hall

Sarah Hanson
Extension Educator
Ag & Natural Resources
Johnson County

Rob Souchon
Fair Board Superintendent
Open Class – Fitzpatrick Hall

It is the policy of the Purdue University Cooperative Extension Service that all persons have equal opportunity and access to its educational programs, services, activities, and facilities without regard to race, religion, color, sex, age, national origin or ancestry, marital status, parental status, sexual orientation, disability or status as a veteran.

Purdue University is an Affirmative Action institution. This material may be available in alternative formats.

PURDUE
UNIVERSITY

PURDUE | **LOCAL FACES**
EXTENSION | COUNTLESS CONNECTIONS
1-888-EXT-INFO • www.extension.purdue.edu

Order or download materials from
Purdue Extension • The Education Store
www.the-education-store.com

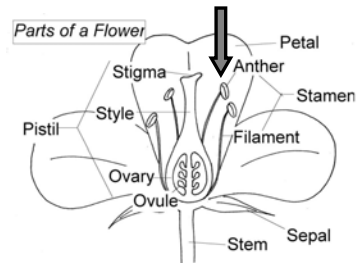
FITZPATRICK HALL – OPEN CLASS HORTICULTURE, GARDEN, AND CROPS

All **Crops** will be due in Fitzpatrick Hall on **Friday, July 13, 2018**
between 8:00 am and 9:15 am.

All Open Class **Horticulture, Garden, & Market Baskets** will be due in
Fitzpatrick Hall on **Saturday, July 14, 2018,**
between 8:00 am and 11:00 am.

Rules:

1. Any resident of Johnson County, member of the Johnson County Extension Homemakers Association, or member of one of the Johnson County garden clubs are welcome to exhibit in the Open Class Exhibits.
2. There are **separate exhibitor numbers** for horticulture, garden, & crops in Fitzpatrick Hall. This is independent of Scott Hall's open class. **(Please note the entry tag & exhibitor card on pages 39–41 are NOT for Fitzpatrick Hall.)** Entry tags/exhibitor numbers will be available in the Extension Office after June 1st or at exhibit drop-off.
3. Exhibitors must choose the flower name and type to determine the proper item no. for each entry.
4. Limit of one (1) entry per item no. per exhibitor.
5. Cut flower specimens should be exhibited in soft drink bottle or similar container. The containers are to be provided by the exhibitor. Containers will not be returned to exhibitor at the end of the fair, with the exception of potted plants, market baskets, artistic design, and jars with grain.
6. Horticultural material must be fresh and **grown by the exhibitor**, unless otherwise stated, as in items 548 and 549. Wild flowers and weeds are permissible in the Artistic Design classes. No artificial plants should be used. Items not meeting this requirement will be disqualified.
7. All vegetable and crop exhibits must be **grown by the exhibitor**.
8. Potted plants must be in possession of the exhibitor at least 3 months prior to showing, with pot size not to exceed 18 inches in diameter. Plants with artificial shine will be disqualified.
9. Grand and Reserve Grand Champions awarded in following departments: Horticulture (cut flowers, roses, potted plants, artistic design), Garden Vegetables, Market Basket, and Crops.
10. Anthers (pollen bearing parts) must be removed from the stamens of lilies (see diagram) **prior to entry**.
11. All potted plants, except hanging baskets, must have a watering hole in pot and a drip tray.
12. Judging is closed to the public.



*Grand Champions in Horticulture (Cut Flowers, Roses, Potted Plants, Artistic Design)
will be awarded \$30;
Reserve Grand Champions in Horticulture will be awarded \$20.
Sponsored by Johnson County Fair Association. Awards given at pickup on 7/22/18.*

500 – HORTICULTURE DEPARTMENT

CUT FLOWERS CLASS:

(Leave a small amount of foliage on each flower)

Item No.

- 501 - Aster - any color, 1 bloom
- 502 - Bachelor Button same color, 3 stems in bloom
- 503 - Coneflower - same color, 3 stems in bloom
- 504 - Dahlia - any color, 1 bloom-with foliage (will be judged only if flower has foliage)
- 505 - Daisy - yellow center with white petals, 3 blooms
- 506 - Geranium - garden grown, 3 blooms
- 507 - Gladiolus - 2 stalks, same color
- 508 - Lily - 2 stems in bloom (stamens must be removed)
 - A. Oriental
 - B. Daylily
 - C. Others
- 509 - Marigold
 - A. Large - 1 bloom, any color and variety
 - B. Small - 3 blooms, same color and variety
- 510 - Pansy - same color, 3 blooms
- 511 - Petunia
 - A. Double - 2 stems in bloom
 - B. Single - large, 2 stems in bloom
 - C. Vining
- 512 - Rudbeckia (Black-eyed Susan) - 2 stems
- 513 - Snapdragon - 1 stem
- 514 - Sunflower, cut - any color, 2 stems
- 515 - Zinnia
 - A. Large - any color, 1 bloom
 - B. Small - any color and variety, 3 blooms
- 516 - Blooming Bush (excluding Hydrangea) - 1 stem
- 517 - Any other cut flower - 2 stems or blooms as appropriate
 - A. Annual
 - B. Perennial
- 518 - Hydrangea - 1 stem

ROSES CLASS:

Bloom should be ½ to ¾ open

Item No.

- 521 - Peace Variety, 1 bloom
- 522 - Hybrid Tea, 1 bloom
- 523 - Miniature, 1 bloom
- 524 - Any other variety, 1 bloom or spray as appropriate

POTTED PLANTS CLASS:

No commercial shine on plants– note rule #8 on page 2

Item No.

- 531 - African Violet
 - A. Double
 - B. Single
 - C. Miniature – single or double
- 532 - Orchid
- 533 - Blooming Plant – plant in bloom, one root system
- 534 - Non- Blooming Plant – one root system
- 535 - Small Cactus – not over 6" pot
- 536 - Hanging Basket – must be exhibited with hanger
- 537 - Container Planting – not limited to one root system; pot no larger than 18 inches in diameter and 18 inches tall.
- 538 - Terrarium – covered top, three or more plants, not to exceed 20" x 20"
- 539 - Fairy Garden (Miniature Gardens) – not limited to one root system; embellishments encouraged; container not to exceed 20" x 20"
- 540 - Succulents - not limited to one root system
 - A. Potted - container not to exceed 20" x 20"
 - B. Wreath - not to exceed 24" diameter
 - C. Other

ARTISTIC DESIGN CLASS:

Fresh horticultural material only, **grown by the exhibitor**, not purchased, except for **Item No. 548 "Wild & Wonderful"** and **Item No. 549 "The Corner Store."** Accessories acceptable.

Item No.

- 541 - "By Candlelight": fresh flower arrangement using one or more candles
- 542 - "Pitcher Posies": fresh flower kitchen arrangement
- 543 - "Summer Harvest": fresh arrangement of flowers, fruits, and vegetables (container no larger than 10" x 10")
- 544 - "Friendly Faces": arrangement of fresh flowers
- 545 - "Green with Envy": fresh foliage arrangement
- 546 - "Tom Thumb's Garden": arrangement 6 inches or less in width and height
- 547 - "Lovers Lane": arrangement of roses
- 548 - "Wild & Wonderful": arrangement of roadside material
- 549 - "The Corner Store": arrangement of purchased flowers

People's Choice Award in Artistic Design

Award: \$50.00

Nomination will take place Sunday – Tuesday of fair week;
Ribbon award will be posted on Wednesday with monetary
award given on Sunday between 1—3 pm during project pickup.
Award sponsored by the **Johnson County Garden Club**.

*Grand Champion in Garden Vegetables will be awarded \$30;
Reserve Grand Champion in Garden Vegetables will be awarded \$20.
Sponsored by Johnson County Fair Association. Awards given at pickup on 7/22/18.*

600 – GARDEN VEGETABLES DEPARTMENT

1. Vegetables will be discarded with the exception of potatoes and onions. Potatoes and onions will be available for pick up on Sunday, July 22, 2018, from 1:00 pm–3:00 pm.
2. All exhibits must be grown by the exhibitor.
3. Plates for the exhibit will be provided.
4. The fairboard members and assistants reserve the right to discard any exhibit which does not make a good appearance during the fair.

Item No.

- 601 - Beans: snap, green or wax - 20 beans, in pod
- 602 - Beets - 5
- 603 - Broccoli - 1 head
- 604 - Cabbage - 1 head
- 605 - Carrots - 3
- 606 - Corn, Sweet - 5 ears, in husks
- 607 - Cucumbers
 - A. Slicing - 5
 - B. Pickling - 5
- 608 - Eggplant - 1
- 609 - Okra - 5 pods
- 610 - Onions - 5
 - A. White or yellow
 - B. Red or purple
- 611 - Pepper
 - A. Green mango - 5
 - B. Other pepper - 5
- 612 - Potato
 - A. White - 5
 - B. Red - 5
 - C. Other - 5
- 613 - Squash
 - A. Zucchini - 1
 - B. Other summer - 1
 - C. Winter - 1
- 614 - Tomatoes
 - A. Red - 5
 - B. Yellow or Orange - 5
 - C. Small red or yellow, cherry or grape - 12
- 615 - Herbs - 3 stems of the same variety; must be exhibited in a container of water
- 616 - Any other vegetable
- 617 - King of the Garden
 - A. Sunflower, largest diameter
 - B. Zucchini, largest by weight

**Grand Champion in Market Basket will be awarded \$30;
Reserve Grand Champion in Market Basket will be awarded \$20.
Sponsored by Johnson County Fair Association. Awards given at pickup on 7/22/18.**

650 – MARKET BASKET DEPARTMENT

Due Saturday, July 14, 2018 between 8:00 am and 11:00 am, Fitzpatrick Hall

1. This basket must contain at least six (6) different vegetables or fruits and should include food enough for a family of four (4). Example: 2 tomatoes, 4 potatoes, 2 onions, 4 beets, 2 cucumbers and 1 head of cabbage.
2. Each exhibitor must furnish own basket. The Johnson County Fair Association will not be responsible for loss or damage to basket.
3. You may choose from the following list of vegetables for the Market Basket:

Beans – green or wax – 1 pound	Beets – 4
Broccoli – 1 head	Cabbage – 1 head
Cauliflower – 1 head	Carrots – 4
Corn – 4 ears	Cucumbers – 2
Eggplant – 1	Muskmelon – 1
Okra – 4	Onions – 2
Potatoes—4	Peppers – 2
Tomatoes—2	Squash—1
Zucchini – 1	



*Grand Champion in Crops will be awarded \$30;
Reserve Grand Champion in Crops will be awarded \$20.
Sponsored by Johnson County Fair Association. Awards given at pickup on 7/22/18.*

700 – CROPS: GRAIN AND HAY

Due Friday, July 13, 2018, between 8:00 am and 9:15 am, Fitzpatrick Hall

RULES:

1. All crops must be grown in 2018 except shelled corn and soybeans, which must be grown in 2017.
2. All exhibits must be grown and exhibited by Johnson County residents.
3. Corn, soybeans, wheat, and oats must be exhibited in 1-gallon clear glass jars.
4. No insecticide in jars.
5. Jars with grain will be returned on Sunday, July 22, between 1:00 pm and 3:00 pm. Hay and corn plants will not be returned. Any jars with grain that are not picked up at this time will be discarded.

Item No.

- 701 – 1 gallon shelled corn
- 702 – 1 gallon soybeans
- 703 – 1 gallon new wheat
- 704 – 1 gallon new oats
- 705 – ¼ bale alfalfa hay
- 706 – ¼ bale alfalfa – grass hay
- 707 – ¼ bale red clover hay
- 708 – ¼ bale red clover – grass hay
- 709 – ¼ bale grass hay



**2018 OPEN CLASS
SCOTT HALL
HEALTH and HUMAN SCIENCES EXHIBITS**

For More Information: Johnson Co. Extension Service, 317-736-3724
Elizabeth Acker, 317-627-5436

An EXHIBITOR CARD is located on pages 39-40. Please complete the card and bring to check in. Should you need additional cards, call the Johnson County Extension Office at 317-736-3724 or stop by 484 N. Morton Street (Located on the northeast corner of the Johnson County Fairgrounds) in Franklin. Exhibitors may pick up entry tags so that they may complete them prior to checking in at Scott Hall. Tags are available at the Extension Office and will also be available during the check in times when you bring your items to the Johnson County Fair. An example of an Entry Tag is on page 41.

GENERAL RULES FOR SCOTT HALL EXHIBITORS

1. Any resident of Johnson County, member of the Johnson County Extension Homemakers Association, or member of one of the Johnson County garden clubs are welcome to exhibit in the Open Class Exhibits. Individuals 19 years and older must exhibit in the Adult categories; individuals 18 years old or under may elect to exhibit in the Adult or Junior categories, but cannot exhibit in both.
2. **Fitzpatrick Hall Exhibits (Horticulture, Garden, & Crops) see General Rules on page 2.**
3. The adult and junior departments to be exhibited in are as follows:
 - 100 - Fine Arts
 - 200 - Quilting
 - 300 - Handicrafts
 - 400 - Floral Arrangements
 - 500 - Photography
 - 600 - Sewing
 - 700 - Needlecraft
 - 800 - Baked Goods
 - 900 - Food Preservation
 - 1000 - V.I.P. - Very Important People
4. ALL EXHIBITS MUST HAVE BEEN MADE BY THE EXHIBITOR DURING THE PAST 12 MONTHS. Exceptions: See rules for the "Fine Arts, Photography and Quilting Classes".
5. In Adult and Junior Departments each exhibitor may enter **up to FOUR entries** per item number. **Exceptions: Adult QUILTING up to TWO and Adult FOOD PRESERVATION Departments only ONE per item number**, (When there are more than five entries in an item number, the judge may award additional 1st, 2nd, and 3rd placings.)
6. "Any Other" or "Miscellaneous" Item categories are for entries that **do not fit in any other item number** and should not be used to enter more than maximum like-items. Request to speak to the department superintendent if you are uncertain of the correct item number for your entry.
7. ALL Junior Classes are divided by school grade: (a) kindergarten and under; (b) grades 1, 2 and 3; (c) grades 4, 5 and 6; (d) grades 7, 8 and 9 and (e) grades 10, 11 and 12. Grade level is determined as of December 31, 2017.
8. There is no entry fee or pre-registration.
9. All Open Class Scott Hall exhibits will be checked-in at Scott Hall on:

Friday, July 13, 2018	6 pm - 8 pm
Saturday, July 14, 2018	9 am - 11 am
10. In Scott Hall, exhibitors will be given an exhibitor number upon entering the northeast entrance of Scott Hall and will use the same number in all departments in Scott Hall. An identification ticket stub will be given to each exhibitor as articles are checked-in. Exhibitors must keep and present their ticket stub to claim exhibits at the release time. In the event that an exhibitor cannot collect their exhibits on Sunday, July 22, 2018,

- another person may claim exhibits with original exhibitor's ticket stub.
11. All exhibits will be released on Sunday, July 22, 2018, from 1:00 pm to 3:00 pm There will be no exceptions to this rule. Remaining exhibits will be taken to the Johnson County Extension Office, 484 N. Morton Street, in Franklin and can be picked up starting **Tuesday, July 24** from 8:00 am to 4:30 pm. All exhibits must remain in Scott Hall from check-in to release. The Johnson County Fair Board and Johnson County Extension Office are not responsible for exhibits not picked up by 3:00 pm on Sunday, July 22.
 12. No exhibitor will be allowed in Scott Hall during judging. The Fair Board Superintendents, Class Superintendents, the Extension Educator, and Fair Committee workers will be present to enforce this rule and to assist the judges.
 13. Superintendents may split classes or create a new class if they deem it necessary.
 14. The awards will be as follows:
 - a. In each Adult and Junior department, except VIP: Grand Champion and Reserve Grand Champion Ribbons. VIP has Grand Champion only.
 - b. In each Adult class, except VIP: Champion Ribbon
 - c. In each Junior class: Champion Ribbon
 - d. In each Adult and Junior item number, 1st, 2nd, 3rd, and Honorable Mention placings will be awarded, as determined by the judge(s).
 - e. In V.I.P.—Very Important People department – All exhibits will receive blue V.I.P ribbons. One Grand Champion Ribbon will be awarded in the department.
 - f. Total Points for Open Class Exhibitor entries will be awarded as follows: Champion (30 points); Blue (20 points); Red (15 points); White (10 points); Honorable Mention (5 points).
1st place: \$50; 2nd place: \$30; 3rd place: \$20 — Sponsored by JoCoEHA
 15. Awards are always given at the discretion of the judges and all decisions are final.
 16. The Johnson County Fair Board and Johnson County Extension Office assume no responsibility for lost, stolen or damaged articles.
 17. PLEASE NOTE: The County Fair competition is separate from the State Fair competition. Winners DO NOT automatically advance to the State Fair; therefore it is not necessary to win a county award to enter the State Fair. Entry deadline for State Fair is JULY 1. For more information about the State Fair, call the ENTRY DEPT. at the Indiana State Fair, 317-927-7515 or register online at <http://www.indianastatefair.com/state-fair/entry-information/indiana-arts-building/>

*Grand Champions in Adult Fine Arts will be awarded \$30;
Reserve Grand Champions in Adult Fine Arts will be awarded \$20;
and the Grand Champion in Junior Fine Arts will be awarded \$20 .
Sponsored by Johnson County Fair Association. Awards given at pickup on 7/22/18.*

100 – FINE ARTS DEPARTMENT

RULES SPECIFIC TO FINE ARTS:

1. Exhibits must have been made by the exhibitor during the past three years and never before shown at the Johnson County Fair.
2. All exhibits must be appropriately framed and ready to hang. **Wire hangers are required; all hangers must be securely attached to reduce the risk of breakage.** Exhibitors who elect to stretch the canvas on a frame still must have exhibit **ready to hang**.
3. Exhibits are limited in size up to 30" x 40" (canvas size).
4. Exhibits must be clearly marked as Professional, Adult Amateur or Student.
5. Artist must consider themselves either a Professional or Adult Amateur artist. Professional artist is defined as an artist or craftsman who is in the Arts and Crafts teaching profession or doing extended exhibiting or other professionally related activities. Exhibitors entering as Professional Artists must bring original and independently created work only and not copies of another artist's work. An artist MAY NOT submit work in both Professional and Adult Amateur classes.

6. At the discretion of the judge, one Grand Champion and/or Reserve Grand Champion Ribbon will be awarded in each of the following classes: Professional, Adult Amateur and Junior. Junior class does not receive Reserve Grand Champion ribbon.

PROFESSIONAL CLASS:

Item No.

- 101 - Oil
- 102 - Water Color
- 103 - Pastels or Charcoal
- 104 - Pencil
- 105 - Felt-Tip or Pen and Ink (ball point pen not appropriate)
- 106 - Miniatures - 6" x 8" or smaller canvas size
- 107 - Acrylic
- 108 - Mixed Media
- 109 - Sculpture (includes Woodcarving)
- 110 - Acrylic Fabric Painting
- 111 - Calligraphy
- 112 - Oriental Ink Painting
- 113 - Scratchboard Technique
- 114 - Any Other

ADULT AMATEUR CLASS:

Item No.

- 115 - Oil - Original
- 116 - Oil - Copy (tape a copy of original work to back)
- 117 - Water Color - Original
- 118 - Water Color - Copy (tape a copy of original work to back)
- 119 - Pastels or Charcoal
- 120 - Pencil
- 121 - Felt-Tip or Pen and Ink (ball point pen not appropriate)
- 122 - Miniatures - 6" x 8" or smaller canvas size
- 123 - Acrylic - Original
- 124 - Acrylic - Copy (tape a copy of original work to back)
- 125 - Mixed Media
- 126 - Sculpture (includes Woodcarving)
- 127 - Acrylic Fabric Painting
- 128 - Calligraphy
- 129 - Oriental Ink Painting
- 130 - Scratchboard Technique
- 131 - Collage or Free Design
- 132 - Any Other

JUNIOR FINE ARTS CLASS:

Item No.

- 133 - Student/Grades 10-11-12, Any Media
- 134 - Student/Grades 7-8-9, Any Media
- 135 - Student/Grades 4-5-6, Any Media
- 136 - Student/Grades 1-2-3, Any Media
- 137 - Child/Kindergarten and Younger, Any Media

*The Grand Champion in Adult Quilting will be awarded \$30;
the Reserve Grand Champion in Adult Quilting will be awarded \$20;
the Grand Champion in Junior Quilting will be awarded \$20.
Sponsored by Johnson County Fair Association. Awards given at pickup on 7/22/18.*

200 – QUILTING DEPARTMENT

RULES SPECIFIC TO QUILTING:

1. **Each Adult exhibitor may enter only two (2) entries per item no.**
2. Exhibits must have been completed by the exhibitor during the past 12 months. Quilter's name and year completed must be sewn to the quilt back. Exception: Antique Quilts
3. Exhibits previously entered in the Johnson County Fair are not eligible.
4. Quilts, any other article and garments, must have 3 layers to be considered in this department.
5. Wall hanging must be ready to hang. Do not bring rod.
6. Exhibits must be clean and in good condition. Articles with pet hair or smoke odors/ discoloration may be denied entry at the discretion of the department superintendent.
7. Exhibits are judged on the basis of workmanship, quality of materials used, harmony of colors, and overall condition.
8. Miniature quilts must use miniature blocks.

ANTIQUÉ QUILTS CLASS: (25 years or older):

Item No.

201 – Old Quilts – 25 years and older; include brief history if known

202 – Old Quilts – 25 years and older, restored; must specify what was restored

TIED QUILTS CLASS:

Item No.

203 – Any tied quilt

HAND OR MACHINE–PIECED, HAND–QUILTED BY ENTRANT CLASS:

Item No.

204 – Appliquéd

205 – Embroidered

206 – Pieced

207 – Rag quilt

208 – Art quilt

209 – Christmas quilt

210 – Sampler (variety of styles and/or mix of blocks)

211 – Mixed techniques

212 – Twin quilt or smaller

213 – Baby or crib quilt

214 – Miniature quilt (using miniature blocks)

215 – Pillow

216 – Wall hanging

217 – Table runner

218 – Placemats

219 – Garment

220 – Any other article

HAND OR MACHINE–PIECED, PAID OTHER TO HAVE HAND–QUILTED CLASS:

Item No.

221 – Appliquéd

222 – Embroidered

223 – Pieced

224 – Art quilt

225 – Christmas quilt

226 – Sampler (variety of styles and/or mix of blocks)

- 227 - Mixed techniques
- 228 - Twin quilt or smaller
- 229 - Baby or crib quilt
- 230 - Wall hanging
- 231 - Any other article

HAND OR MACHINE-PIECED, MACHINE-QUILTED ON REGULAR MACHINE CLASS:

Item No.

- 232 - Appliquéd
- 233 - Embroidered
- 234 - Pieced
- 235 - Rag quilt
- 236 - Art quilt
- 237 - Christmas quilt
- 238 - Sampler (variety of styles and/or mix of blocks)
- 239 - Mixed techniques
- 240 - Whole cloth
- 241 - Twin quilt or smaller
- 242 - Baby or crib quilt
- 243 - Miniature quilt (using miniature blocks)
- 244 - Pillow
- 245 - Wall hanging
- 246 - Table runner
- 247 - Placemats
- 248 - Garment
- 249 - Any other article

HAND OR MACHINE PIECED, QUILTED ON LONG ARM CLASS:

Item No.

- 250 - Appliquéd
- 251 - Embroidered
- 252 - Pieced
- 253 - Art quilt
- 254 - Christmas quilt
- 255 - Sampler (variety of styles and/or mix of blocks)
- 256 - Mixed techniques
- 257 - Twin quilt or smaller
- 258 - Baby or crib quilt
- 259 - Wall hanging
- 260 - Table runner
- 261 - Placemats
- 262 - Any other article

QUILT MADE BY A GROUP; HAND QUILTED CLASS: (Entry should be in GROUP NAME)

Item No.

- 263 - Appliquéd
- 264 - Embroidered
- 265 - Pieced
- 266 - Art quilt
- 267 - Christmas quilt
- 268 - Sampler (variety of styles and/or mix of blocks)
- 269 - Mixed techniques
- 270 - Twin quilt or smaller
- 271 - Wall hanging
- 272 - Any other article

QUILT MADE BY A GROUP; ANY MACHINE QUILTED CLASS: (Entry should be in GROUP NAME)

Item No.

- 273 - Appliquéd
- 274 - Embroidered
- 275- Pieced
- 276- Art quilt
- 277- Christmas quilt
- 278- Sampler (variety of styles and/or mix of blocks)
- 279- Mixed techniques
- 280- Twin quilt or smaller
- 281- Wall hanging
- 282- Any other article

JUNIOR QUILTING CLASS:

Please note: Each Junior may enter up to 4 items per item number.

Item No.

- 283 - Student/Grades 10-11-12, Any Quilt
- 284- Student/Grades 7-8-9, Any Quilt
- 285- Student/Grades 4-5-6, Any Quilt
- 286- Student/Grades 1-2-3, Any Quilt
- 287 - Child/Kindergarten and Younger, Any Quilt

***The Grand Champion in Adult Handicrafts will be awarded \$30;
the Reserve Grand Champion in Adult Handicrafts will be awarded \$20;
the Grand Champion in Junior Handicrafts will be awarded \$20.
Sponsored by Johnson County Fair Association. Awards given at pickup on 7/22/18.***

300 - HANDICRAFTS DEPARTMENT

HERITAGE CRAFTS CLASS:

Item No.

- 301 - Round Basket
- 302 - Market Basket
- 303 - Miscellaneous Basket - larger than 6" in diameter, any style
- 304 - Miscellaneous Basket - 6" diameter or less, any style
- 305 - Holiday Basket - other than Christmas
- 306 - Metal Craft - forged
- 307 - Metal Craft - blacksmithing work
- 308 - Musical Instrument
- 309 - Paper Stamping
- 310 - Stamping - other than paper
- 311 - Stenciling
- 312 - Wall Hanging
- 313 - Woodworking - Limit size to 2 1/2' x 8' if displayed on table; exception, those items that can set on floor.
- 314 - Wood Carving
- 314A - Felting - needle, water, etc.

DECORATIVE ACCENTS CLASS:

Item No.

- 315 - Candle
- 316 - Decorative Hat
- 317 - Metal Craft
- 318 - Table Decoration - other than holidays
- 319 - Door Decorations - other than needlecraft or painting
- 320 - Egg - decorated
- 321 - Holiday Decoration - Valentine's

- 322 - Holiday Decoration - St. Patrick's
- 323 - Holiday Decoration - Easter
- 324 - Holiday Decoration - 4th of July
- 325 - Holiday Decoration - Halloween
- 326 - Holiday Decoration - Thanksgiving
- 327 - Soft Sculpture - except for toys
- 328 - Wall Decoration - other than needlecraft or painting
- 329 - Window Decoration

CERAMICS/POTTERY/GLASS CRAFTS CLASS:

Item No.

- 330 - Ceramic Cast - glazed and dated
- 331 - Ceramic Cast - stained and dated
- 332 - Painted Bisque - dated
- 333 - Doll - China or Ornamental
- 334 - Plaster Craft
- 335 - Stain Glass
- 336 - Miscellaneous ceramic; pottery or glass craft

MISCELLANEOUS CRAFTS CLASS:

Item No.

- 337 - Decorated Gift Bag - other than Christmas, submit flat
- 338 - Gift Wrapping - other than Christmas
- 339 - Greeting Cards - hand painted, 2 any theme
- 340 - Greeting Cards - scrapbook type, 2 any theme
- 341 - Jewelry - earrings
- 342 - Jewelry - necklaces
- 342A - Jewelry - hair accessories
- 343 - Scrapbook, general
- 344 - Scrapbook, mini
- 345 - T-shirt or sweatshirt, painted
- 346 - T-shirt or sweatshirt, appliquéd
- 347 - T-shirt or sweatshirt, stitched appliquéd
- 348 - T-shirt or sweatshirt, any other
- 349 - Recycled Craft - attach note listing recycled materials
- 349A - Recycled Group Craft—attach note listing recycled materials; **enter in GROUP NAME**
- 350 - Recycled Accessory - attach note listed recycled materials
- 351 - Painted Garment or Item - other than T-shirt, sweatshirt
- 352 - Appliquéd Garment or Item - other than T-shirt, sweatshirt
- 353 - Paper Twist Crafts, any item
- 353A - Other Miscellaneous Craft

NOTE:

T-shirts and sweatshirts are judged on creativity and may be purchased or handmade, but must be decorated by exhibitor

CHRISTMAS AT THE FAIR CLASS:

Item No.

- 354 - Angel
- 355 - Table or Mantle Decoration
- 356 - Christmas Basket
- 357 - Christmas T-shirt or sweatshirt, painted
- 358 - Christmas Appliquéd Garment - other than T-shirt or sweatshirt
- 359 - Christmas - metal craft item
- 360 - Decorated Gift Bag, submit flat
- 361 - Door Decoration - other than wreath
- 362 - Gift Wrapping
- 363 - Santa and/or Mrs. Claus - hand crafted
- 364 - Snowman or Snow Woman - hand crafted
- 365 - Soft Sculpture
- 366 - Stocking
- 367 - Tablecloth

- 368 - Table Runner
- 369 - Free Standing Tree - up to 24" height
- 370 - Tree Ornament - ready to hang
- 371 - Tree Skirt
- 372 - Wall Decoration - other than wreath
- 373 - Wreath

TOYS CLASS:

Item No.

- 374 - Soft Sculpture Dolls - handmade
- 375 - Any Other Doll - except China Doll
- 376 - Soft Sculpture Toys - handmade
- 377 - Doll Clothing - must be displayed on doll
- 378 - Models - limit three (3) foot; displayed on board no larger than 1" of model - model must be attached to base to prevent breakage
- 379 - Wood Toys
- 379A - Restored Toy--attach note as to what was restored
- 380 - Any Other Toy

JUNIOR HANDICRAFTS CLASS:

Item No.

- 381 - Student/Grades 10-11-12, Any Handicraft
- 382 - Student/Grades 7-8-9, Any Handicraft
- 383 - Student/Grades 4-5-6, Any Handicraft
- 384 - Student/Grades 1-2-3, Any Handicraft
- 385 - Child/Kindergarten and Younger, Any Handicraft

***The Grand Champions in Adult Floral Arrangements will be awarded \$30;
Reserve Grand Champions in Adult Floral Arrangements will be awarded \$20;
the Grand Champion in Junior Floral Arrangements will be awarded \$20.
Sponsored by Johnson County Fair Association. Awards given at pickup on 7/22/18.***

400 - FLORAL ARRANGEMENTS DEPARTMENT

RULES:

1. Dried, silk, artificial, paper or ribbon arrangements only. Live arrangements are entered and exhibited in Open Class Flowers in Fitzpatrick Hall.
2. Wreaths must have hangers.
3. Base of containers should not exceed 11 1/2 inches due to shelf display width.
4. Florists should exhibit in Professional classes if they meet one of the following qualifications:
 - 1 - are in a florist teaching profession
 - 2 - doing extensive exhibiting
 - 3 - other professionally related activities
5. Florists MAY NOT submit work in both Professional and Adult Amateur classes.
6. At the discretion of the judge, one Grand Champion and Reserve Grand Champion Ribbon may be awarded in the Professional, Adult Amateur and Junior classes. Junior class does not receive Reserve Grand Champion ribbon.

PROFESSIONAL FLORAL ARRANGEMENTS CLASS:

Item No.

- 401 - Floral Arrangement - dry, 12 inches or under
- 402 - Floral Arrangement - silk, 12 inches or under
- 403 - Floral Arrangement - dry and silk, 12 inches or under
- 404 - Floral Arrangement - any other artificial, 12 inches or under
- 405 - Floral Arrangement - dry, over 12 inches
- 406 - Floral Arrangement - silk, over 12 inches
- 407 - Floral Arrangement - dry and silk, over 12 inches

- 408 - Floral Arrangement - any other artificial, over 12 inches
- 409 - Floral Arrangement - Wreath
- 410 - Floral Arrangement - Wall, other than wreath
- 411 - Floral Arrangement - Wedding/Bridal Bouquet
- 412 - Corsage, nosegay or boutonniere

PROFESSIONAL FLORAL ARRANGEMENTS HOLIDAY CLASS:

Item No.

- 413 - Floral Arrangement - Valentine's
- 414 - Floral Arrangement - St. Patrick's
- 415 - Floral Arrangement - Easter
- 416 - Floral Arrangement - 4th of July
- 417 - Floral Arrangement - Halloween
- 418 - Floral Arrangement - Thanksgiving
- 419 - Floral Arrangement - Christmas

ADULT AMATEUR FLORAL ARRANGEMENTS CLASS:

Item No.

- 420 - Floral Arrangement - dry, 12 inches or under
- 421 - Floral Arrangement - silk, 12 inches or under
- 422 - Floral Arrangement - dry and silk, 12 inches or under
- 423 - Floral Arrangement - any other artificial, 12 inches or under
- 424 - Floral Arrangement - dry, over 12 inches
- 425 - Floral Arrangement - silk, over 12 inches
- 426 - Floral Arrangement - dry and silk, over 12 inches
- 427 - Floral Arrangement - any other artificial, over 12 inches
- 428 - Floral Arrangement - Wreath
- 429 - Floral Arrangement - Wall, other than wreath
- 430 - Floral Arrangement - Wedding/Bridal Bouquet
- 431 - Corsage, nosegay or boutonniere

ADULT AMATEUR FLORAL ARRANGEMENTS HOLIDAY CLASS:

Item No.

- 432 - Floral Arrangement - Valentine's
- 433 - Floral Arrangement - St. Patrick's
- 434 - Floral Arrangement - Easter
- 435 - Floral Arrangement - 4th of July
- 436 - Floral Arrangement - Halloween
- 437 - Floral Arrangement - Thanksgiving
- 438 - Floral Arrangement - Christmas

JUNIOR FLORAL ARRANGEMENTS CLASS:

Item No.

- 439 - Student/Grades 10-11-12, Any Floral
- 440 - Student/Grades 7-8-9, Any Floral
- 441 - Student/Grades 4-5-6, Any Floral
- 442 - Student/Grades 1-2-3, Any Floral
- 443 - Child/Kindergarten and Younger, Any Floral

*The Grand Champions in Adult Photography will be awarded \$30;
Reserve Grand Champions in Adult Photography will be awarded \$20;
Grand Champion in Junior Photography will be awarded \$20.
Sponsored by Johnson County Fair Association. Awards given at pickup on 7/22/18.*

500 – PHOTOGRAPHY DEPARTMENT

RULES FOR ALL PHOTOGRAPHY EXHIBITS:

1. For Salon Prints, Monochrome and Natural Color, each photograph must be at least 8" x 10" or up to 16" x 20" and be permanently mounted on a solid 16" x 20" photographic mount board or foam core. Masonite, corrugated cardboard or thin poster board is not acceptable. Overlay mats are acceptable. Overlay mats must be attached on all 4 sides. Exhibitors should be aware that double faced tape, or a thin layer of spray glue will not hold up in high heat and humidity. Un-matted portion of photography shall not be less than 7" x 9" or 63 square inches. Entries not meeting specifications will be disqualified.
2. For Snapshots, exhibit eight (8) prints no smaller than 3 1/2" x 5" and no larger than 4" x 6", securely mounted (photo corners not acceptable) on a solid 16" x 20" photographic mount board or foam core. Masonite, corrugated cardboard or thin poster board is not acceptable. Number snapshots on back side of mount board so judge can refer to the numbered photo in their comments.
3. For Panoramic Prints, exhibit five (5) prints, securely mounted (photo corners not acceptable) on a solid 16" x 20" photographic mount board or foam core. Masonite, corrugated cardboard or thin poster board is not acceptable. Number prints on back side of mount board so judge can refer to the numbered photo in their comments.

THE FOLLOWING RULES apply to all Item Numbers:

4. All photographs must be taken by exhibitor.
5. Photographers, who derive more than one-half of his/her income from photography or are in the teaching profession or doing extensive exhibiting or other professionally related activities, are considered Professional Photographers and should exhibit in Professional classes only.
6. Prints in frames or under glass are not acceptable. Plastic covering may be used.
7. Photographs must have been taken within the last three years.
8. Exhibits previously entered in the Johnson County Fair are not eligible.
9. Exhibitor's name should be CONCEALED.
10. On Exhibitor's tag at the top indicate what camera type was used to take your photograph(s) such as: DIGITAL or SLR (Single Lens Reflex). Sample Entry Tag shown on page 41.

PROFESSIONAL SALON MONOCHROME PRINTS (Black and White or Toned) CLASS:

Item No.

- 501 – Animals
- 502 – Flowers
- 503 – Holiday Theme
- 504 – Human Interest
- 505 – Nature
- 506 – Scenic
- 507 – Portraits – Single Individual
- 508 – Portraits – Group
- 509 – Computer or Digitally Enhanced – (Photographer's Original attached to back of exhibit)
- 510 – Special Effect (ex: solarization, negative sandwiching, photo enhanced through hand painting) (Photographer's Original attached to back of exhibit)
- 511 – Experimental/Creative (Photographer's Original attached to back of exhibit)
- 512 – Any other

PROFESSIONAL SALON NATURAL COLOR PRINTS CLASS:

Item No.

- 513 - Animals
- 514 - Flowers
- 515 - Holiday Theme
- 516 - Human Interest
- 517 - Nature
- 518 - Scenic
- 519 - Portraits - Single Individual
- 520 - Portraits - Group
- 521 - Computer or Digitally Enhanced - (Photographer's Original attached to back of exhibit)
- 522 - Special Effect (ex: solarization, negative sandwiching, photo enhanced through hand painting) (Photographer's Original attached to back of exhibit)
- 523 - Experimental/Creative (Photographer's Original attached to back of exhibit)
- 524 - Any Other

ADULT AMATEUR SALON MONOCHROME PRINTS (Black and White or Toned) CLASS:

Item No.

- 525 - Animals
- 526 - Flowers
- 527 - Holiday Theme
- 528 - Human Interest
- 529 - Nature
- 530 - Scenic
- 531 - Portraits - Single Individual
- 532 - Portraits - Group
- 533 - Computer or Digitally Enhanced - (Photographer's Original attached to back of exhibit)
- 534 - Special Effect (ex: solarization, negative sandwiching, photo enhanced through painting) (Photographer's Original attached to back of exhibit)
- 535 - Experimental/Creative (Photographer's Original attached to back of exhibit)
- 536 - Any Other

ADULT AMATEUR SALON NATURAL COLOR PRINTS CLASS:

Item No.

- 537 - Animals
- 538 - Flowers
- 539 - Holiday Themes
- 540 - Human Interest
- 541 - Nature
- 542 - Scenic
- 543 - Portraits - Single Individual
- 544 - Portraits - Group
- 545 - Computer or Digitally Enhanced - (Photographer's Original attached to back of exhibit)
- 546 - Special Effect [ex: solarization, negative sandwiching, photo enhanced through painting] (Photographer's Original attached to back of exhibit)
- 547 - Experimental/Creative (Photographer's Original attached to back of exhibit)
- 548 - Any Other

ADULT AMATEUR SNAPSHOTS CLASS:

Item No.

- 549 - Black and White or Toned Prints - single subject
- 550 - Black and White or Toned Prints - multi subjects
- 551 - Color Prints - single subject
- 552 - Color Prints - multi subjects
- 553 - Panoramic Color Prints

JUNIOR PHOTOGRAPHY CLASS:

Item No.

- 554 - Student/Grades 10-11-12, Any Media
- 555 - Student/Grades 7-8-9, Any Media
- 556 - Student/Grades 4-5-6, Any Media
- 557 - Student/Grades 1-2-3, Any Media
- 558 - Child/Kindergarten and Younger, Any Media

***The Grand Champion in Adult Sewing will be awarded \$30;
Reserve Grand Champion in Adult Sewing will be awarded \$20;
Grand Champion in Junior Sewing will be awarded \$20.
Sponsored by Johnson County Fair Association. Awards given at pickup on 7/22/18.***

***In honor of their dear friend, Gingham Homemakers is sponsoring
The Karen Deutsch Award in Adult Sewing.
The \$25 award will be given at pickup on 7/22/18.***

600 – SEWING DEPARTMENT

RULES:

1. All garments must be exhibited on hangers.
2. All exhibits must have been made by the exhibitor during the last 12 months.

INFANT WEAR AND PRE-SCHOOL FOR 0-5 YEAR OLDS CLASS:

Item No.

- 601 - Play Wear for 0-2 year olds - can be 2-piece
- 602 - Dress Wear for 0-2 year olds - can be 2-piece
- 603 - Christening Gown for 0-2 year olds
- 604 - Any Other Article for 0-2 year olds
- 605 - Play Wear for 3-5 year olds - can be 2-piece
- 606 - Dress Wear for 3-5 year olds - can be 2-piece
- 607 - Any other Article for 3-5 year olds

GIRLS WEAR FOR 6-12 YEAR OLDS CLASS:

Item No.

- 608 - Casual Wear for 6-12 year old girls - can be 2-piece
- 609 - Dress Wear for 6-12 year old girls - can be 2-piece
- 610 - Any Accessory Item for 6-12 year old girls
- 611 - Outer Wear for 6-12 year old girls
- 612 - Any other Article for 6-12 year old girls

TEEN GIRLS FOR 13-18 YEAR OLDS CLASS:

Item No.

- 613 - Casual Wear for 13-18 year old girls - can be 2-piece
- 614 - Dress Wear for 13-18 year old girls - can be 2-piece
- 615 - Special Occasion Wear for 13-18 year old girls
- 616 - Any Accessory Item for 13-18 year old girls
- 617 - Outer Wear for 13-18 year old girls
- 618 - Any other Article for 13-18 year old girls

BOYS WEAR FOR 6-15 YEAR OLDS CLASS:

Item No.

- 619 - Casual Wear for 6-15 year old boys - can be 2-piece
- 620 - Dress Wear for 6-15 year old boys - can be 2-piece
- 621 - Vest for 6-15 year old boys
- 622 - Outer Wear for 6-15 year old boys
- 623 - Any other Article for 6-15 year old boys

OLDER BOYS AND ADULT MEN FOR AGE 16 THROUGH ADULT CLASS:

Item No.

- 624 - Casual Wear for age 16 through adult men - can be 2-piece
- 625 - Dress Wear for age 16 through adult men - can be 2-piece
- 626 - Formal Wear for age 16 through adult men
- 627 - Any other Article for age 16 through adult men

ADULT WOMEN - CASUAL WEAR CLASS:

Item No.

- 628 - Sports Wear
- 629 - Separates - 2-5 coordinating garments
- 630 - Blouse or Top
- 631 - Dress
- 632 - Unlined Vest
- 633 - Lined Vest
- 634 - Skirt
- 635 - Slacks, Culottes or Shorts
- 636 - Unlined Suit
- 637 - Unlined Jacket
- 638 - Lined Jacket
- 639 - Unlined Outer Wear
- 640 - Lined Outer Wear
- 641 - Any other Casual Article

ADULT WOMEN - DRESS WEAR CLASS:

Item No.

- 642 - Dress - can also be 2-piece matching skirt and top
- 643 - Separates - 2-5 coordinating garments
- 644 - Blouse or Top
- 645 - Skirt
- 646 - Slacks
- 647 - Vest
- 648 - Unlined Suit
- 649 - Lined Suit
- 650 - Unlined Blazer or Jacket
- 651 - Lined Blazer or Jacket
- 652 - Lined Outerwear
- 653 - Any other Dress Article

SPECIALTY SEWING CLASS:

Item No.

- 654 - Evening Wear
- 655 - Wedding Gown
- 656 - Heirloom Sewing
- 657 - Smocking
- 658 - Any other Specialty Article

CREATIVE SEWING CLASS:

Item No.

- 659 - Costume - 1-5 pieces
- 660 - Garment with appliqué
- 661 - Sewing Machine embellished article
- 662 - Serger Decorated Garment
- 663 - Quilted Garment or article
- 664 - Sewn garment with sewing machine embroidery
- 665 - Sewn accessory or miscellaneous article with sewing machine embroidery
- 666 - Sewn article for the home with sewing machine embroidery
- 667 - Any other Article utilizing creative techniques

SEWING FOR HOME CLASS:

Item No.

- 668 - Sewn Pillow - other than needlecraft or quilted
- 669 - Pillow case (set of 2)
- 670 - Placemats (set of 4)
- 671 - Tablecloth
- 672 - Table Napkins (set of 4)
- 673 - Curtain or Drapery
- 674 - Hanging Banner or Flag
- 675 - Apron
- 676 - Any other Article for the home
- 677 - Article for home utilizing creative stitching techniques

ACCESSORY AND MISCELLANEOUS ARTICLES CLASS:

Item No.

- 678 - Sewn or Serged Purse or Tote Bag
- 679 - Sewn or Serged Hat or Hood
- 680 - Sewn or Serged Doll Clothes
- 681 - Sewn or Serged Toy
- 682 - Any other Sewn or Serged Accessory or Miscellaneous Article

JUNIOR SEWING CLASS:

Item No.

- 683 - Student/Grades 10-11-12, Any Sewn Item
- 684 - Student/Grades 7-8-9, Any Sewn Item
- 685 - Student/Grades 4-5-6, Any Sewn Item
- 686 - Student/Grades 1-2-3, Any Sewn Item
- 687 - Child/Kindergarten and Younger, Any Sewn Item

***Grand Champion in Adult Needlecraft will be awarded \$30;
Reserve Grand Champion in Adult Needlecraft will be awarded \$20;
the Grand Champion in Junior Needlecraft will be awarded \$20.
Sponsored by Johnson County Fair Association. Awards given at pickup on 7/22/18.***

700 – NEEDLECRAFT DEPARTMENT

RULES:

1. Please specify whether exhibit is an original, a kit or a copy.
2. Please SIGN and DATE your framed needlework. All other needlecraft exhibits must attach note with completion date.
3. All framed work must have a sturdy hanger, preferably a wire hanger.
4. Exhibits must be clean and in good condition.

CROCHET CLASS:

Item No.

- 701 - Full-Size Afghan
- 702 - Baby Afghan
- 703 - Cape, Poncho or Shawl
- 704 - Infant or Children's Wear
- 705 - Dresser Scarf
- 706 - Doll in Crocheted Garment
- 707 - Doily - 12" and under
- 708 - Doily - over 12"
- 709 - Gloves
- 710 - Hat
- 711 - Scarf
- 712 - Pillow

713 - Potholder
714 - Sweater
715 - Tablecloth
716 - Vest
717 - Any other Crocheted Article - made with thread
718 - Any other Crocheted Article - made with yarn

CROSS STITCH CLASS:

Item No.

719 - Counted Cross Stitch - clothing item
720 - Cross Stitch - stamped design
721 - Counted Cross Stitch - any other
722 - Counted Cross Stitch, Framed - Design Area, up to 100 sq. in. - sturdy hanger
723 - Counted Cross Stitch, Framed - Design area 101-150 sq. in. - sturdy hanger
724 - Counted Cross Stitch, Framed - Design Area 151 sq. in. and over - sturdy hanger
725 - Counted Cross Stitch - hoop size 6" or smaller
726 - Counted Cross Stitch - hoop size over 6"
727 - Counted Cross Stitch - Companion pieces - multiple pieces with same theme; framed
728 - Counted Cross Stitch - Two/three Dimensional

EMBROIDERY CLASS:

Item No.

729 - Candle Wicking
730 - Embroidery - floss or perle cotton
731 - Crewel Embroidery
732 - Hardanger Embroidery
733 - Ribbon Embroidery
734 - Embroidery, Any other
735 - Any Combination Stitch

KNITTING CLASS:

Item No.

736 - Full-Size Afghan
737 - Baby Afghan
738 - Infant's Wear - birth to 2 years
739 - Children's Wear - age 3 and up
740 - Cape, Poncho or Shawl
741 - Gloves
742 - Hat
743 - Scarf
744 - Slippers or Socks
745 - Pillow
746 - Suit or Coat
747 - Sweater
748 - Tablecloth or Runner
749 - Any other Knitted Article

LATCH HOOK CLASS:

Item No.

750 - Latch Hook - any item except rug

RUGS CLASS: Exhibit not to exceed 5' x 8'

Item No.

751 - Crocheted
752 - Latch hook, cut yarn
753 - Hooked, traditional - wide cut primitive
754 - Hooked, traditional - fine cut
755 - Hooked, traditional, any holiday

- 756 - Original Design
- 757 - Any other rug - woven, braided, etc (not hooked)

NEEDLEPOINT CLASS:

Item No.

- 758 - Needlepoint - framed - design area up to 100 sq. in., sturdy hanger
- 759 - Needlepoint - framed - design area 101-150 sq. in., sturdy hanger
- 760 - Needlepoint - framed - design area 151 sq. in. and over, sturdy hanger
- 761 - Needlepoint - hoop size 6" or smaller
- 762 - Needlepoint - hoop size over 6"
- 763 - Pillow
- 764 - Plastic Canvas Needlepoint - any flat article, i.e. magnet
- 765 - Plastic Canvas Needlepoint - any 3-dimensional article, i.e. doll, tissue box
- 766 - Any other Needlepoint

TATTING CLASS:

Item No.

- 767 - Antique/Vintage
- 768 - Bookmark
- 769 - Doily
- 770 - Edging
- 771 - Garment Embellishment
- 772 - Holiday
- 773 - Trim-Any other

WEAVING CLASS:

Item No.

- 774 - Weaving - off loom, any article
- 775 - Weaving - loom, any article
- 776 - Huckweaving, any article
- 777 - 4 oz skein of hand spun yarn
- 778 - Item made from home spun wool yarn

JUNIOR NEEDLECRAFT CLASS:

Item No.

- 779 - Student/Grades 10-11-12, Any Item
- 780 - Student/Grades 7-8-9, Any Item
- 781 - Student/Grades 4-5-6, Any Item
- 782 - Student/Grades 1-2-3, Any Item
- 783 - Child/Kindergarten and Younger, Any Item

784 - **PILLOW OF HOPE PROJECT**

Johnson County Extension Homemakers are sponsoring the 17th annual "Pillow of Hope" project to benefit Turning Point Domestic Violence Services. Turning Point is a not-for-profit organization providing shelter and other services to battered women, men, and children. **To enter a Pillow of Hope:** Participant should embellish either a homemade or purchased pillowcase. The pillow case may be decorated with embroidery, tatted or crocheted edging, lace, paint or other embellishments. The case and embellishment need to be washable. The embellished case must be displayed on a new pillow provided by the entrant. **Pillow cases without a new pillow will be accepted, but will not be considered for ribbon placings or People's Choice Award.** Following the fair, all exhibits in the "Pillow of Hope" project will be delivered to Turning Point in Columbus, Indiana.

People's Choice Award in Pillow of Hope Project — Award: \$25.00

Voting will take place Sunday - Thursday of fair week. Award given on Sunday, July 22nd.
Sponsored by the **Trafalgar Extension Homemakers**.

*The Grand Champion in Adult Baked Goods will be awarded \$30;
Reserve Grand Champion in Adult Baked Goods will be awarded \$20;
Grand Champion in Junior Baked Goods will be awarded \$20.
Sponsored by Johnson County Fair Association. Awards given at pickup on 7/22/18.*

*In honor of their dear friend, Providence Homemakers is sponsoring
The Janet Baker Award in Adult Baked Goods.
The \$25 award will be given at pickup on 7/22/18.*

800 – BAKED GOODS DEPARTMENT

RULES:

1. Each exhibitor may enter up to four (4) entries per item no., but each entry must be a **different recipe**. (Example: In 815/Chocolate Chip Cookies, entrant could bring a recipe for dark chocolate chip and another for white chocolate chips with nuts.)
2. Exhibits must be homemade (from scratch) except where noted otherwise. **Pie crusts may be purchased, as long as specified in recipe.**
3. Exhibits must be exhibited on disposable plates or containers; prefer product is covered with a zip closure bag rather than plastic wrap.
4. Product's recipe may be used in only one (1) Item Number in Baked Goods.
5. Recipe required showing ingredients used in each part of product. Typewritten is preferred. Include your name, address, name of recipe and item number. All blue ribbon recipes will be printed and distributed during Fair Week.
6. For food competitions: Filling, frosting, glazing, pie filling, and meringue, (whether uncooked or cooked) are not permitted to contain cream cheese, sour cream, heavy cream, or whipped cream as the nature of these products increases the moisture content and water activity of the food. Foods with a higher moisture content and water activity can be ideal growing conditions for food borne pathogens, even if the ingredient is part of a batter and baked. Additionally, raw milk, raw milk products or uncooked eggs/egg whites are not permitted. Eggs/egg whites that have been cooked to 160 °F (i.e. pasteurized or included as part of a batter and baked) are acceptable. No home-canned fruits, vegetables, or meats are permitted in products. Recipes must be provided that show which ingredients were used in each part of the product. Contestant should carefully wash their hands and make sure that their hands do not have any open cuts before preparing foods. Contestants should not be preparing food exhibits for competition within 48 hours of recovering from any illness. Whenever possible, baked products should be transported and stored in chilled coolers (41 °F).
7. Judges and individuals who will consume products from county and state competitions should be informed that they are at risk for food borne illness since the established policy cannot guarantee that an entry which may be a 'potentially hazardous food' has been properly prepared or handled before, during or following the competition.
8. Consumers of competitive food exhibits being sold at auction or used for hospitality purposes should be notified they could be at risk for food borne illness since the established policy cannot guarantee that an entry which may be a 'potentially hazardous food' has been properly prepared or handled before, during, or following the competition.
9. Exhibitors have the option of exhibiting the whole product rather than the portion if they desire. Example: exhibiting a whole Angel Food Cake rather than 1/4 portion.
10. All exhibits become the property of the Johnson County Fair Board after check-in.

CAKES CLASS: PLEASE NOTE – Exhibit 1/4 cake
Item No.

- 801 – 1/4 Angel Food Cake – box mix, unfrosted
- 802 – 1/4 Angel Food Cake – homemade, unfrosted
- 803 – 1/4 Chocolate Cake – 2 layer, frosted
- 804 – 1/4 Spice Cake – 2 layer, frosted
- 805 – 1/4 Pound Cake

- 806 - 1/4 Pineapple Upside Down Cake
- 807 - 1/4 Any Other Cake
- 808 - 3 Cupcakes - any kind, unfrosted

COOKIES CLASS: Bar cookies, please cut in 2-inch squares
Item No.

- 809 - 6 Brownies - unfrosted
- 810 - 6 Drop Cookies
- 810A - 6 No Bake Cookies
- 811 - 6 Molded, Shaped or Cut Cookies
- 812 - 6 Bar Cookies
- 813 - 6 Filled Cookies
- 814 - 6 Fancy Cookies
- 815 - 6 Chocolate Chip Cookies
- 816 - 6 Mexican Wedding Cookies
- 817 - 6 Peanut Butter Cookies
- 818 - 6 Oatmeal Cookies
- 819 - 6 Molasses Cookies
- 820 - 6 Snickerdoodle Cookies
- 821 - 6 Sugar Cookies
- 822 - 6 Any Other Cookies

QUICK BREADS CLASS:

- Item No.
- 823 - Banana Bread - half loaf
 - 824 - Zucchini Bread - half loaf
 - 825 - Coffee Cake - half of the product
 - 826 - 3 Muffins
 - 827 - 3 Baking Powder Biscuits
 - 828 - Any Other Quick Breads - half of the product

YEAST BREADS CLASS:

- Item No.
- 829 - 3 Plain Rolls
 - 830 - 3 Fancy Dinner Rolls
 - 831 - Plain Bread - half loaf
 - 832 - Fancy Bread - half of the product
 - 833 - Sourdough Bread - half loaf
 - 834 - Coffee Cake - half of the product
 - 835 - 3 Sweet Breakfast Rolls
 - 836 - Any Other Yeast Breads

BREADS MADE IN MACHINE CLASS:

- Item No.
- 837 - White Bread - half loaf
 - 838 - Whole Grain Bread - half loaf
 - 839 - Raisin Bread - half loaf
 - 840 - Sweet Bread - half loaf
 - 841 - French Bread - half loaf
 - 842 - Other Machine Bread - half loaf

PIES CLASS:

- Item No.
- 843 - 1/4 Fruit Pie
 - 844 - 1/4 Other Pie - Not Cream or Custard

CANDY CLASS:

Item No.

- 845 - Chocolate Fudge - 6 pieces
- 846 - Peanut Butter Fudge - 6 pieces
- 847 - Peanut Brittle - 6 pieces
- 848 - Divinity - 6 pieces
- 849 - Mints, Scratch Recipe - 6 pieces
- 850 - Caramels - 6 pieces
- 851 - Lollipops - 6
- 852 - Caramel Corn - 2 cups
- 853 - Any Other Candy

MAKE IT IN YOUR MICROWAVE CLASS:

Item No.

- 854 - 1/4 Cake - any kind
- 855 - 6 Cookies - any kind
- 856 - Candy - 6 pieces, any kind
- 857 - Caramel Corn - 2 cups

MAKE IT WITH HONEY CLASS: (Product must contain 51% honey as the sweetener.)

Item No.

- 858 - 1/4 Cake
- 859 - 6 Cookies
- 860 - Quick Bread - half loaf or 3 Muffins or 3 Biscuits
- 861 - Yeast Bread - half loaf or 3 Rolls

HEART HEALTHY CLASS: (Major emphasis will be on lowering fat and cholesterol and increasing fiber.)

Item No.

- 862 - Quick Bread - half loaf or 3 Muffins, etc.
- 863 - 6 Cookies
- 864 - Any Other Heart Healthy Baked Good
- 864A - Gluten Free Baked Good

MAKE IT WITH A BOX MIX CLASS: (Recipe required with how you altered the commercial mix. Use box mix as part of ingredients.)

Item No.

- 865 - 1/4 Cake
- 866 - 6 Cookies
- 867 - Quick Breads - half loaf or 3 Muffins or 3 Biscuits
- 868 - Yeast Bread - half loaf or 3 Rolls

DECORATED CAKES CLASS:

Item No.

- 869 - Wedding Cake
- 870 - Other Decorated Cake
- 871 - Decorated Cupcakes—3 cupcakes

JUNIOR BAKED GOODS CLASS:

Item No.

- 872 - Student/Grades 10-11-12, Any Baked Product
- 873 - Student/Grades 7-8-9, Any Baked Product
- 874 - Student/Grades 4-5-6, Any Baked Product
- 875 - Student/Grades 1-2-3, Any Baked Product
- 876 - Child/Kindergarten and Younger, Any Baked Product

*The Grand Champion in Adult Food Preservation will be awarded \$30;
Reserve Grand Champion in Adult Food Preservation will be awarded \$20;
Grand Champion in Junior Food Preservation will be awarded \$20.
Sponsored by Johnson County Fair Association. Awards given at pickup on 7/22/18.*

*In honor of their dear friend, Gingham Homemakers will present
The Sherrie Dougherty Award to a champion in Food Preservation.
The \$25 award will be given at pickup on 7/22/18.*

900 – FOOD PRESERVATION DEPARTMENT

RULES:

1. **Each exhibitor may enter only one (1) entry per item no.**
2. All entries must have been preserved within the last year (12 months).
3. All exhibits, except dehydrated products, are required to be processed in boiling water bath or pressure canner appropriate for the acidity of the product.
4. Exhibit must be labeled with name of the food, the date preserved, the method of food preservation. Recipe required with source of canning instructions included. Example: USDA Complete Guide to Home Canning, 2015, etc.
5. Exhibitor's name should not be on recipe; we will identify with exhibitor's number.
6. If the food is canned, a recipe must accompany the product indicating ingredients, quantities and directions. The recipe must include whether the food was hot or raw packed, boiling water or pressure canned, the process time, and the pounds of pressure if pressure-canned. A judge needs to know if the proper amount of citric acid, lemon juice has been added to canned tomatoes, for example.
Example:
 - 1) Apricots, hot pack, boiling water canner, 20 minutes. Aug. 21, 2017
Recipe:.....
 - 2) Spaghetti sauce, hot pack, pressure canned, 11 pounds pressure, 45 minutes. September 6, 2017
Recipe:.....
 - 3) Strawberry Jam, hot pack, boiling water canner, 5 minutes. June 10, 2018
Recipe:.....
7. All exhibits must be in brand name canning jars, with screw-bands intact, and standard new canning lid. No jar or lid decorations such as ribbons and cloth.
8. Dried fruits and vegetables may be displayed in canning jars or a jar such as a baby food jar with at least one-half (1/2) cup of dried product.
9. Exhibits usually will not be judged by tasting; visual inspection will be used for the most part. Jars may need to be opened, when spoilage is suspected or differences among entries are very small.
10. Exhibits that spoil will be disposed of; including jar because of contamination risks.
11. Paraffin is not accepted on jams, jellies, fruit butters, preserves and marmalades. Boiling water bath processing required for jams, jellies, fruit butters, preserves and marmalades.
12. **Note to Judges:** Purdue Extension Food Safety Policy stresses that tasting of a food product is solely at the discretion of the judge. Judges are **NOT** to taste any low-acid or acidified preserved food, like green beans or tomato products, and are discouraged from tasting any other home preserved food.

PICKLES/RELISHES CLASS:

Item No.

- 901 – Bread and Butter Pickles
- 902 – Dill Pickles, sliced, chunks, spears or whole
- 903 – Quick Sour Pickles
- 904 – Zucchini Pickles
- 905 – Sweet Cucumber Pickles
- 906 – Pickled Beets

- 907 - Corn Relish
- 908 - Sweet Relish
- 909 - Dill Relish
- 910 - Any Other Pickle (must be USDA or Extension Tested Recipe) such as pickled asparagus, pickled dilled beans, pickled three-bean salads, pickled carrots, pickled cauliflower, Brussels sprouts, dilled okra, pickled pearl onions, marinated peppers, pickled bell peppers, pickled hot peppers, pickled jalapeño pepper rings, pickled yellow pepper rings, pickled sweet green tomatoes, pickled mixed vegetables, pickled bread and butter zucchini
- 911 - Any Other Pickle Relish (must be USDA or Extension Tested Recipe) such as chayote and pear relish, Piccalilli, pickled green tomato relish, pickled horseradish sauce, pickled pepper-onion relish, spicy jicama relish, tangy tomatillo relish
- 912 - Any Other Fruit or Vegetable Relish other than pickle (must be USDA or Extension Tested Recipe) such as Chow Chow, onion relish, Oscar relish, pear relish, all chutneys

SAUCES/SALSA CLASS:

Item No.

- 913 - Chile Salsa
- 914 - Tomatillo or Green Tomato Salsa
- 915 - Tomato Salsa
- 916 - Tomato/Green Chile Salsa
- 917 - Tomato Taco Sauce
- 918 - Catsup
- 919 - Barbecue Sauce
- 920 - Spaghetti Sauce
- 921 - Any Other Sauce (must be USDA or Extension Tested Recipe)
- 922 - Any Other Salsa (must be USDA or Extension Tested Recipe)

VEGETABLES CLASS:

Item No.

- 923 - Asparagus
- 924 - Beets
- 925 - Carrots
- 926 - Corn, cream style
- 927 - Corn, whole kernel
- 928 - Green Beans
- 929 - Tomatoes - whole
- 930 - Tomatoes - quartered, or crushed
- 931 - Tomato Juice
- 932 - Any Other Vegetables (must be USDA or Extension Tested Recipe)

JELLIES CLASS:

Item No.

- 933 - Apple
- 934 - Berry
- 935 - Grape
- 936 - Apricot
- 937 - Peach
- 938 - Two or more fruits
- 939 - Any Other Jelly (must be USDA or Extension Tested Recipe)

JAMS OR PRESERVES CLASS:

Item No.

- 940 - Apricot
- 941 - Berry - Other Than Strawberry
- 942 - Cherry
- 943 - Grape
- 944 - Peach

944A - Pear
945 - Strawberry
946 - Two or More Fruits
947 - Any Other Jam or Preserve (must be USDA or Extension Tested Recipe)

FRUIT BUTTERS CLASS:

Item No.
948 - Apple Butter
949 - Apricot Butter
950 - Peach Butter
951 - Any Other Fruit Butter other than Pumpkin (must be USDA or Extension Tested Recipe)

FRUIT HONEY OR FRUIT SYRUP CLASS:

Item No.
952 - Blueberry Fruit Syrup
953 - Cherry Fruit Syrup
954 - Grape Fruit Syrup
955 - Strawberry Fruit Syrup
956 - Peach Honey
957 - Pear Honey
958 - Strawberry Honey
959 - Any Other Fruit Honey or Syrup (must be USDA or Extension Tested Recipe)

FRUITS CLASS:

Item No.
960 - Applesauce
961 - Apples
962 - Cherries
963 - Peaches
963A - Pears
964 - Pie Filling - any fruit
965 - Any Other Fruit (must be USDA or Extension Tested Recipe)

DRIED FRUITS CLASS:

Item No.
966 - Apples
967 - Bananas
968 - Apricots
969 - Fruit Leather
970 - Any Other Dried Fruit

DRIED VEGETABLES CLASS:

Item No.
971 - Corn
972 - Carrots
973 - Celery
974 - Onions
975 - Any Other Dried Vegetable

DRIED HERBS CLASS:

Item No.
976 - Basil
977 - Oregano
978 - Parsley
979 - Sage
980 - Mixed Herb and Spice Blend
981 - Dill
982 - Cilantro
983 - Rosemary

984 - Other herb

JUNIOR FOOD PRESERVATION CLASS:

Please note: Each Junior may enter up to 4 items per item number.

Item No.

985- Student/Grades 10-11-12, Any Food Preservation category above

986- Student/Grades 7-8-9, Any Food Preservation category above

987 - Student/Grades 4-5-6, Any Food Preservation category above

988- Student/Grades 1-2-3, Any Food Preservation category above

989- Child/Kindergarten and Younger, Any Food Preservation category above

**Grand Champion in V.I.P. will be awarded \$30.
Sponsored by Johnson County Fair Association. Award given at pickup on 7/22/18.**

**1000 - V.I.P. DEPARTMENT
(VERY IMPORTANT PEOPLE)**

RULES:

1. The following classes are for exhibitors who are physically, mentally or, emotionally challenged.
2. **Individuals exhibiting in V.I.P. may not exhibit in other departments (100 thru 900), with the exception of Group Projects, (i.e. Recyclable Group Craft in Handicrafts Dept.) However, Group Projects in other departments MUST be entered in the name of the group and not the name of an individual exhibiting in V.I.P.**
3. Any number of items may be entered by an individual exhibitor, provided they are not the same item.
4. Please remember that all exhibits must have been created within the last year.
5. No baked goods will be accepted in the V.I.P Department.

ARTS AND CRAFTS CLASS:

Item No.

1001 - Christmas - any item

1002 - Holiday Item - other than Christmas

1003 - Creative Craft - any item

1004 - Drawing and Painting - any item

1005 - Woodworking - any item

1006 - Photography

1007 - Down Memory Lane - any item representing a past memory

NEEDLECRAFTS CLASS:

Item No.

1008 - Crocheting - any item

1009 - Knitting - any item

1010 - Needlework - any item

1011 - Quilting - any item

ENTRY NUMBER _____
Office Use

Entry Appreciated by: July 1, 2018
Send to: Johnson Co. Extension Office
484 N. Morton St.
Franklin, IN 46131

***You need 1 Entry Form for each outfit.
Only 1 entry form for family outfit.***

JOHNSON COUNTY STYLE SHOW ENTRY FORM

NAME: _____

ADDRESS: _____

DIVISIONS

(Please check one)

- Non – Professional – One who does not qualify as a professional using definition below.
- Professional – One who has received any monetary compensation in excess of \$1,200 per year over the last 5 years in any phase of clothing (construction, judging, modeling, fabric sales, teaching, a degree in clothing and textiles).

CLASSES

(Please check one)

- A. FAMILY OUTFITS – Person wearing outfit she/he has made, plus any other individuals wearing garments sewn for them with a coordinated or themed look.
- B. DRESSES – One or two piece dress. Includes a dress with own jacket, coat or vest or jumper and blouse.
- C. COAT OR SUIT – Separate coat for your wardrobe, to be solely a coat with its own accessories. Suits being two or more pieces (i.e. skirt or pants with jacket, cape or vest of the same fabric, shown with or without its own blouse or shirt). Jacket, coat, cape or vest must be lined.
- D. SEPARATES – True coordinates. May be 2, 3 or more garments selected and modeled together for a complete look. All garments must be worn. Each piece should be important enough to stand on its own with other garments. Accessory items such as sweater, blouse or shirt may be a purchased garment.
- E. MY CHOICE – Active wear (i.e. tennis wear, swim wear), western, loungewear or costumes (such as historic, dance, international or Halloween) which do not fit in other classes listed. No bridal gowns, see wedding gowns etc.
- F. WEDDING GOWNS – Seamstress of gown must be present at judging.
- G. BRIDESMAIDS OR FORMAL DRESSES – Seamstress must be present at the judging.
- H. EMBELLISHED W/HAND OR MACHINE EMBROIDERY – Any garment that has been embellished by Hand or Machine Embroidery.
- I. SEWING FOR OTHERS/1 CHILD'S GARMENT OR OUTFIT BIRTH TO AGE 5 – Any type of garment, seamstress must be present.
- J. SEWING FOR OTHERS/1 CHILD'S GARMENT OR OUTFIT (AGES 6 TO 12) – Any type of garment, seamstress must be present.
- K. SEWING FOR OTHERS/1 TEEN'S GARMENT OR OUTFIT (AGES 13 TO 17) – Any type of garment, seamstress must be present.
- L. SEWING FOR OTHERS/1 ADULT GARMENT OR OUTFIT (AGE 18 and OVER) – Any type of garment, seamstress must be present.

The following information is needed to make introductions at the County Style Show. Please complete all information requested.

Seamstress Name _____

Names of Other Models _____

A. Total cost of garment: \$ _____ Pattern Make & Number: _____

Give a detailed description of your garment(s). (Including the pattern envelope may be helpful.) Also, please attach a fabric swatch at the bottom of this page.

B. For family groups, **please list everyone's name with his/her pattern and indicate fabric for each person.**

C. Description of Accessories.

D. Personal Information: Hobbies, Special Interests, Organizations, etc.

Attach Fabric Swatch(es) here, please:

JOHNSON COUNTY STYLE SHOW RULES

1. Garments modeled must have been completed by the contestant after August 1 of the previous year for the county contest.
2. Contestants may enter in more than one class, but the garments must be different in each class.
3. Garments entered in the style show can also be exhibited in the Johnson County Open Class Scott Hall Fair in Department 600 – Sewing. See general rules in the Open Class Exhibit Book beginning on page 8, and Sewing Department rules and categories beginning on page 19.
4. Concerning SEWING FOR OTHERS/CHILDREN’S GARMENTS/ TEEN’S GARMENTS/ADULTS OVER 18 and WEDDING GOWN, BRIDESMAIDS OR FORMALS categories, seamstress must enter the non-professional or professional division in which she/he (seamstress) falls. The seamstress must be present for official judging and the public fashion show presentation. The award will be made to the seamstress.
5. County participation is not necessary to enter the Indiana State Fair Showcase of Fashion, sponsored by IEHA. Details on deadlines and entry fees can be found at. <http://www.indianastatefair.com/state-fair/competitionscontests/indiana-arts-building/>

MONETARY AWARDS for County Style Show

The Johnson County Extension Homemakers (JoCoEHA) will give the following Monetary Awards to style show participants. One blue, one red, and one honorable mention ribbon will be given for every 5 participants in a class. The Monetary Awards are as follows:

Blue Ribbon (1 st place) in class	\$ 5.00
Division Champion Non-Professional and Professional	\$10.00
Overall Reserve Grand Champion of Show	\$25.00
Overall Grand Champion of Show	\$50.00

Participants receiving blue placing will compete for Champion and Reserve Champion in their Division.

JOHNSON COUNTY STYLE SHOW JUDGING DETAILS

1. PLEASE NOTE:

All garments judged at the private judging are expected to be modeled in the County Style Show and Awards Program on **Tuesday evening, July 10, 2018, at 7 pm.**

Location is **The Historic Artcraft Theatre, 57 N. Main St. Franklin, IN.**

2. DATE OF PRIVATE JUDGING:

Thursday, July 5, 2018

3. PRIVATE JUDGING LOCATION:

Purdue Extension Johnson County Office
Located on the North East Corner of the Johnson County
Fairgrounds, Parking north side of building
484 N. Morton Street
Franklin, IN 46131

4. DIRECTIONS TO THE: Johnson County Fairgrounds

Turn west at the intersection of US 31 and State Road 44 (Jefferson Street) in Franklin.
The first street north is Fairgrounds Street. Drive north onto the Fairgrounds, the Extension Office is located on the northeast corner of the Fairgrounds. The building has a green roof; parking is on the north side of the building.

5. PRIVATE JUDGING SCHEDULE:

All participants in a Division will be judged at one time. Please note the time of YOUR Division below. Within the divisions, we move through the classes as presented on the registration form unless all registered participants are present. Should a participant arrive after their division has been judged, they will be judged but not considered for division Champion, Reserve Champion or Grand/Reserve Grand Champion placing.

6:00 – 6:15 p.m. – Professional Division
6:15 – 7:30 p.m. – Non Professional Division

6. All participants of the county show are eligible to enter the State Fair Fashion Show in up to two categories or classes.

JOHNSON COUNTY STYLE SHOW SCORE SHEET FOR JUDGING

This score sheet has been developed to help you understand the points one sees as you appear in public. First impressions can be your greatest asset.

- I. THE CONTESTANT
 - A. General Appearance
 - B. Posture
 - C. Poise
 - D. Personality and Charm
 - E. Grooming

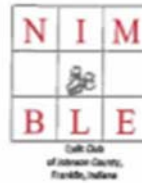
- II. THE COSTUME ON THE CONTESTANT
 - A. Becomingness and wear ability of fashion selected; is it age appropriate?
 - B. Fit (darts fall where necessary, correct shoulder width, ease of fit through hips, correct neck to waistline measurements).
 - C. Style – Choice of pattern.
 - D. Texture
 - E. Color
 - F. Fabric
 - G. Creativity
 - H. Effect of undergarments

- III. THE CONSTRUCTED ARTICLES
 - A. Fabric and Trimmings
 - 1. Suited to design and purpose of garment.
 - 2. Suitable combination of fabric and trim in texture, size, and color.
 - B. Workmanship (quality of work as it contributes to the "professional look" as modeled).
 - 1. General appearance.
 - 2. Accurate cutting – hangs as intended for style.
 - 3. Suitability of seams and finishes to style and fabric.
 - 4. Quality of hand-sewing and machine stitching.
 - 5. Pressing
 - 6. Cleanliness.
 - C. Related Values
 - 1. Durability of materials and design.
 - 2. Judgment showing in distributions of cost among articles. (Buttons, belts and trim).

- IV. SELECTION AND STYLE OF ACCESSORIES
 - A. Right for person and use of costume.



Merry And Bright



Quilt Block Contest 2018 Rules & Entry Form

1. Only one entry per person. Entrants must be a member of Johnson County Extension Homemakers or a resident of Johnson County.
2. All fabrics must be pressed. Use a spray starch to protect against stretching. All fabrics should be 100% cotton. No knits will be accepted.
3. DO NOT quilt your block.
4. You must use the fabric and pattern we furnish so all blocks will be consistent.
5. A white snowflake fabric will be provided by the club. To complete the block, you will need two fabrics: 1 red Christmas fabric and 1 green Christmas fabric. Small prints, batiks, or solid fabric may be used.
6. Blocks will be judged on: originality, fabric utilization, color, design and WORKMANSHIP.
7. Write YOUR NAME IN PERMANENT INK ON A SMALL SEAM ALLOWANCE ON THE BACK OF THE BLOCK. Complete the entry form below and attach it to the block. Judges will note comments on this form.
8. To enter bring or mail (either flat or rolled) to: Johnson County Extension Office, 484 N. Morton St., Franklin, IN 46131 (this is on the northeast corner of the Johnson County Fairgrounds). Deadline is June 22, 2018. No late entries will be accepted.
9. Your block will be on display in Scott Hall during the Johnson County Fair. All blocks entered in this contest will become property of Nimble Thimbles Quilt Club and will not be returned to the entrant.
10. The winning block will receive \$15, second place \$10, third place \$5. Prize money is sponsored by Nimble Thimbles Quilt Club.
11. The contest winners will be announced with the Scott Hall Open Class awards at the Johnson County Fair.

Name _____

Phone _____

Address _____

Zip Code _____



BLUEBERRY BAKING CONTEST
Sponsored by
Johnson County Extension Homemakers
Tuesday, July 17, 2018



RULES:

1. This contest is open to Johnson County residents only and/or Johnson County Extension Homemakers.
2. The product must be made by the individual entering the exhibit.
3. All entries must be accompanied by the recipe. Please **DO NOT PUT YOUR NAME ON THE RECIPE**; you will be given an exhibitor's number at check in to identify your recipe. All recipes become the property of Johnson County Extension Office, Franklin.
4. The Food Safety Rule states for food competitions: **Uncooked and cooked components, including any filling, frosting, glazing, pie filling, and meringue are not permitted to contain cream cheese, sour cream, heavy cream, or whipped cream** as the nature of these products increases the moisture content and water activity of the food. Foods with a higher moisture content and water activity can be ideal growing conditions for food borne pathogens, even if the ingredient is part of a batter and baked. Additionally, **unpasteurized (raw) milk, unpasteurized (raw) milk products, or uncooked eggs/egg whites are not permitted**. Eggs/egg whites that have been cooked to 160°F (i.e. pasteurized or included as part of a batter and baked) are acceptable. **No home-canned fruits, vegetables, or meats are permitted in products**. Recipes must be provided that show which ingredients were used in each part of the product. Contestant should carefully wash their hands and make sure that their hands do not have any open cuts before preparing foods. Contestants should not be preparing food exhibits for competition within 48 hours of recovering from any illness. Whenever possible, baked products should be transported and stored in chilled coolers (41°F).
5. Judges and individuals who will consume products from county and state competitions should be informed that they are at risk for food borne illness since the established policy cannot guarantee that an entry which may be a 'potentially hazardous food' has been properly prepared or handled before, during or following the competition.
6. Each entry must contain some form of blueberry or blueberry product in the baked part of the product.
7. Persons may enter only one entry per class. The classes of entry are: 6 cookies, breads (1/2 loaf or 6 muffins, scones), ½ pie, and miscellaneous baked items. An exhibitor may elect to show a whole product rather than a portion; but an exhibitor cannot show less than the portion indicated in rule #7.
8. All entries should be shown on a disposable container preferably covered with a zip closure bag and will become the property of the Johnson County Fair and will be displayed in Scott Hall following the judging. If exhibitor elects to show a product in a non-disposable container, the Johnson County Fair Board or Johnson County Extension Office is not responsible for loss or breakage.
9. Baked products in canning jars are not accepted, due to food safety issues.
10. Blue, red, or white placing ribbons will be awarded according to quality of the entry.

11. Prize money will be awarded in each class as follows:

1 Champion	\$25	Ch., R.C. and H.M.
1 Reserve Champion	\$15	will be chosen from
6 Honorable Mentions	\$10	blue ribbon entries
Overall Grand Champion	\$100	Chosen from 4 Champions
12. Entries will be accepted Tuesday, July 17, 2018, from 12 Noon until 12:55 p.m. at the **PURDUE EXTENSION JOHNSON COUNTY OFFICE, 484 N. Morton St. Franklin (located on the northeast corner of the Johnson County Fairgrounds, limited parking on north side of building during contest only).**
13. Judging will begin at 1:00 p.m. and exhibitors and interested persons are encouraged to listen to judges' comments. Winners will be announced, and cash awards and ribbons will be presented as the classes are judged.
14. Entry forms are available at the Extension office or at www.extension.purdue.edu/johnson. Entry forms will also be available in Scott Hall, July 15 through 17.

CRITERIA FOR JUDGING BLUEBERRY BAKING CONTEST

1. The total appearance of the product will be taken into consideration, including uniform color, even shape, and pleasant eye appeal.
2. Blueberry or blueberry product must be present in the baked part of the product, giving it a well-blended flavor.
3. The product's internal quality will be evaluated on moistness, tenderness, and a texture consistent with the type of product.
4. Product should have a pleasant Blueberry flavor.

ENTRY FORM – BLUEBERRY BAKING CONTEST – ENTRY FORM

Only ONE (1) form needed per exhibitor.

Complete and bring with product(s) and recipe(s) on July 17, 2018.

NAME _____

PHONE _____

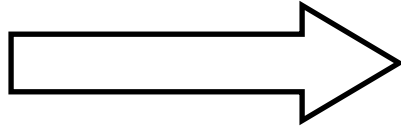
ADDRESS _____

CITY _____ ZIP _____

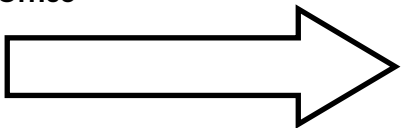
EMAIL _____

Entry tags will be available at exhibit drop off and must be completed for each item. The Exhibitor No. is unique to you and may be different each year; the number will be given to you before you enter Scott Hall to drop off your exhibits. You will need to list each tag and item information on an Exhibitor Card; an example of the Exhibitor Card on page 39. You can also get your tags, Exhibitor Card, and # early to complete at home by dropping by the Extension Office after June 1st.

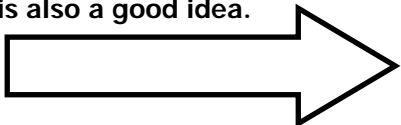
This is an example of an entry for cupcakes; see this item listed on page 25. Notice the Dept is the overall category and for this example is at the top of page 24.



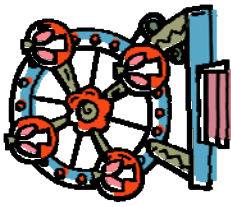
Get the Exhibitor # at drop-off or in advance at the Extension Office



Put the item # again at the bottom of the tag on the Claim Check. A description of the item is also a good idea.



ENTRY TAG	
NO	0476
Dept	BAKED GOODS
Item No	808
Exhibitor No	
Name	JANE FAIR
City	FRANKLIN
CLAIM CHECK <i>Property Surrendered Only On Return Of This Check</i>	
NO	0476
Item No	808 - CUPCAKES



Johnson County Extension Office
484 N. Morton Street
Franklin, IN 46131

NON PROFIT ORG
U.S. POSTAGE
PAID
FRANKLIN,
INDIANA
PERMIT NO. 292